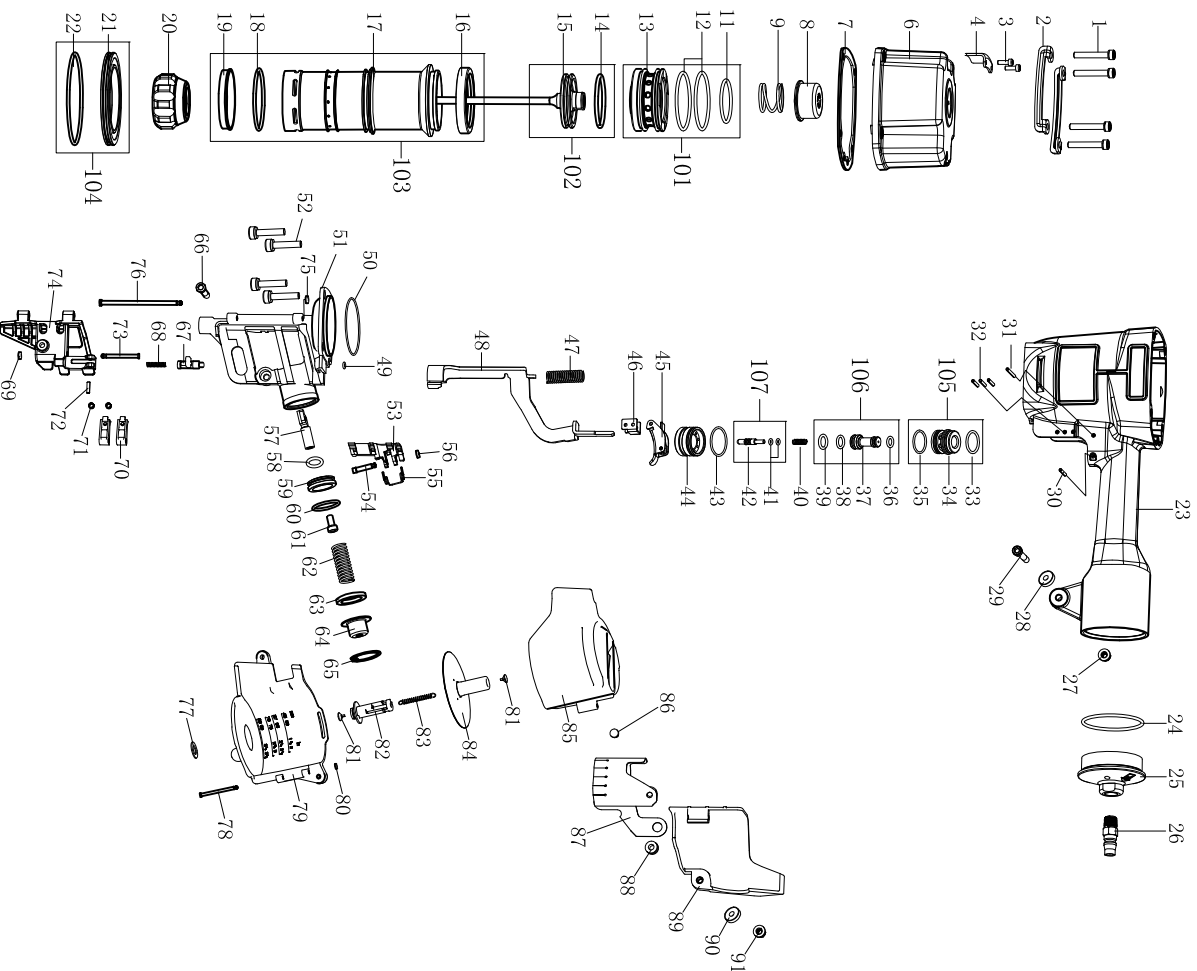


SERIES EXPLODED VIEWS OF NAILER

CN90



ITEM NO.	PART NO	PART NAME	Q'TY	ITEM NO.	PART NO	PART NAME	Q'TY
1	B01-01-060300-02	SCREW	4	52	B01-01-080300-02	SCREW	4
2	AA76A-018A	PROTECTOR	2	53	AA57A-028A	FEED PAWL	1
3	B01-01-040120-02	SCREW	2	54	AA40A-032A	STEP PIN	1
4	AA61A-007A	EXHAUST COVER	1	55	AA57A-010A	SPRING	1
6	AA76A-109A1	CYLINDER CAP	1	56	AA40A-054A	RUBBER JACKER	1
7	AA76A-004A	CYLINDER CAP SEAL	1	57	AA57A-027A	PISTON STAFF	1
8	AA42A-004A	AIRPROOF CUSHION	1	58	B08-009800240	O-RING	1
9	AA76A-014A	SPRING	1	59	AA57A-028A	PISTON	1
11	B08-041600300	O-RING	1	60	B08-025070262	O-RING	1
12	B08-060000300	O-RING	2	61	B01-01-060120-02	SCREW	1
13	AA76A-002A	ACTIVE VALVE	1	62	AA57A-031A	SPRING	1
14	B08-050000355	O-RING	1	63	AA57A-029A	FEED PISTON STOP	1
15	AA76A-107A1	DRIVER	1	64	AA57A-030A	SPRING COLLAR	1
16	AA76A-011A	CYLINDER SEAL	1	65	B03-05-0320-02	RETAINING RING	1
17	AA76A-005A	CYLINDER	1	66	B01-01-060400-02	SCREW	1
18	B08-060000300	O-RING	1	67	AA40A-023A	SHUTOFF	1
19	AA76A-006A	UNILATERAL RINGER	1	68	AA40A-024A	SPRING	1
20	AA76A-007A	BUMPER	1	69	AA40A-054A	RUBBER JACKER	1
21	AA76A-003A	CYLINDER RING	1	70	AA42A-028A	CHECK PAWL	2
22	B08-092000300	O-RING	1	71	AA40A-055A	SPRING	2
23	AA76A-001A	BODY	1	72	B02-030120-02	ROLL PIN	1
24	B08-057000300	O-RING	1	73	AA57B-027A	STEP PIN	1
25	AA42A-014A	TAIL CAP	1	74	AA76A-015A	OPPRESSOR PLATE	1
26	AA06A-018A	AIR PLUG	1	75	AA40A-054A	RUBBER JACKER	1
27	B07-01-060-04	LOCKNUT	1	76	AA76A-019A	STRAIGHT PIN	1
28	AA40A-056A	FLAT WASHER	2	77	AA40A-048A	POST RETAINER	1
29	B01-01-060400-02	SCREW	1	78	AA42B-007A	MAGAZINE PIN	1
30	B02-030240-02	ROLL PIN	1	79	AA61B-001A	MAGAZINE	1
31	B02-030320-02	ROLL PIN	1	80	AA40A-054A	RUBBER JACKER	1
32	B02-030240-02	ROLL PIN	3	81	AA40A-046A	RECEIVER SPRING	2
33	B08-016000180	O-RING	1	82	AA61B-004A	MAGAZINE POST	1
34	AA17D-005A	VALVE	1	83	AA40A-047A	TENSION POST	1
35	B08-017000150	O-RING	1	84	AA61B-102A1	VALI SUPPORT	1
36	B08-005800190	O-RING	1	85	AA61B-002A	MAGAZINE COVER	1
37	AA17D-006A	VALVE PISTON	1	86	AA40A-035A	DUST COVER HOOK	1
38	B08-006800190	O-RING	1	87	AA76A-012A	DUST COVER	1
39	B08-008800190	O-RING	1	88	AA40A-050A	CUSHION	1
40	AA40A-062A	SPRING	1	89	AA76A-017A	MUZZLE COVER	1
41	B08-002500140	O-RING	2	90	AA40A-056A	FLAT WASHER	1
42	AA17D-007A	THIMBLE	1	91	B07-01-060-04	LOCKNUT	1
43	B08-021000150	O-RING	1				
44	AA40A-019A	VALVE CAP	1				
45	AAA0A-114A1	TRIGGER SET	1	101	AA76A-102A1	ACTIVE VALVE SET	
46	AA42A-019A	SAFETY GUIDE	1	102	AA76A-106A1	DRIVER SET	
47	AA42A-038A	SPRING	1	103	AA76A-105A1	CYLINDER SET	
48	AA76A-016A	SAFETY	1	104	AA76A-104A1	CYLINDER RING SET	
49	B08-004000150	O-RING	1	105	AA17D-104A1	VALVE SET	
50	B08-063220178	O-RING	1	106	AA17D-105A1	VALVE PISTON SET	
51	AA76A-013A	MUZZLE	1	107	AA17D-106A1	THIMBLE SET	

GBA76A00301