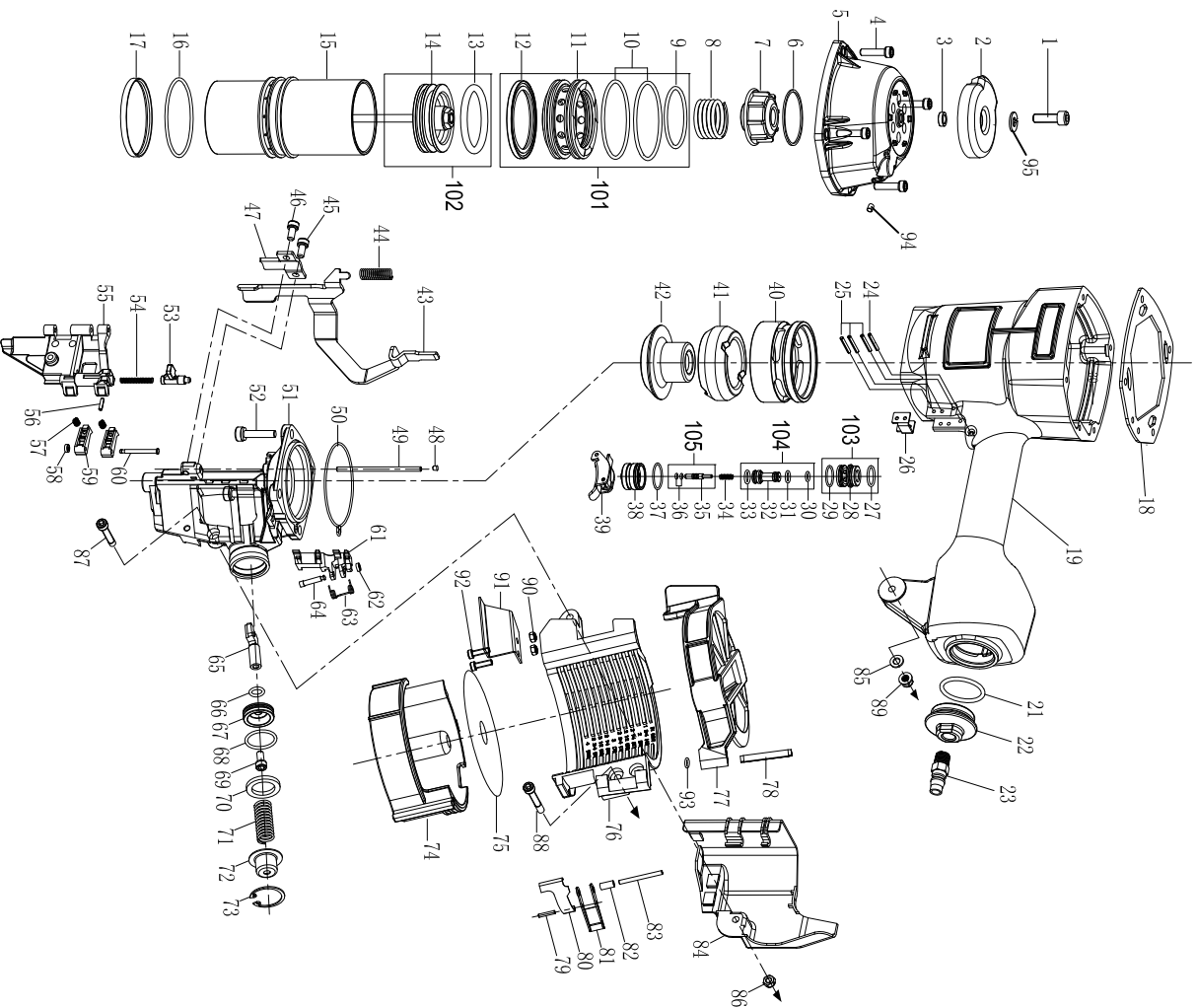


SERIES EXPLODED VIEWS OF NAILER

CN100



ITEM	PART NO	PART NAME	Q' TY	ITEM	PART NO	PART NAME	Q' TY
1	B01-01-080250-02	HEX BOLT	1	52	B01-01-080300-02	HEX BOLT	4
2	AA57A-009A	EXHAUST COVER	1	53	AA40A-023A	DOOR LATCH	1
3	AA57A-008A	EXHAUST COVER SHIM	1	54	AA57A-035A	SPRING	1
4	B01-01-060250-02	HEX BOLT	4	55	AA57A-024A	DOOR	1
5	AA57A-002A	CYLINDER CAP	1	56	B02-030120-02	SPRING PIN	1
6	AA57A-006A	GASSET	1	57	AA40A-055A	SPRING	2
7	AA57A-005A	AIRPROOF CUSHION	1	58	AA40A-054A	O-RING	1
8	AA57A-007A	SPRING	1	59	AA42A-028A	CHECK PAWL	2
9	B08-652000300	O-RING	1	60	AA57A-025A	PIN	1
10	B08-668000300	O-RING	2	61	AA57A-028A	FEED PAWL	1
11	AA57A-003A	ACTIVE VALVE	1	62	AA40A-054A	O-RING	1
12	AA57A-004A	ACTIVE VALVE SEAL	1	63	AA57A-010A	TORSTON SPRING	1
13	B08-652000635	O-RING	1	64	AA40A-032A	PIN	1
14	AA57A-Y08A1	DRIVER	1	65	AA57A-027A	PISTON STAFF	1
15	AA57A-011A	CYLINDER	1	66	B08-009800240	O-RING	1
16	B08-669000265	O-RING	1	67	AA57A-026A	PISTON	1
17	AA57A-012A	UNILATERAL RINGER	1	68	B08-025000250	O-RING	1
18	AA57A-001A	CYLINDER CAP SHIM	1	69	B01-01-060120-02	HEX BOLT	1
19	AA57A-019A	BODY	1	70	AA57A-029A	FEED PISTON STOP	1
21	B08-635700350	O-RING	1	71	AA57A-031A	SPRING	1
22	AA08B-010A	TAIL CAP	1	72	AA57A-030A	FEED PISTON BAFLE	1
23	AA06A-018A	AIR PLUG	1	73	B03-03-0320-02	CIRCLIP	1
24	B02-630240-02	SPRING PIN	1	74	AA42A-030A	NAIL SUPPORT	1
25	B02-630270-02	SPRING PIN	3	75	AA42A-039A	METAL GASKET	1
26	AA42A-019A	SAFETY GUIDE	1	76	AA57A-036A	MAGAZINE	1
27	B08-016000180	O-RING	1	77	AA42A-031A	MAGAZINE COVER	1
28	AA17D-005A	VALVE SLEEVE	1	78	AA42A-032A	MAGAZINE PIN	1
29	B08-017000150	O-RING	1	79	B02-030160-02	SPRING PIN	1
30	B08-005800190	O-RING	1	80	AA42A-033A	FASTENER	1
31	B08-006800190	O-RING	1	81	AA42A-034A	FASTENER SEAT	1
32	AA17D-006A	VALVE	1	82	AA42A-036A	BUSHING	1
33	B08-608800190	O-RING	1	83	B02-030420-02	SPRING PIN	1
34	AA40A-062A	SPRING	1	84	AA57A-034A	MUZZLE COVER	1
35	AA17D-007A	THIMBLE	1	85	AA40A-056A	FLAT WASHER	1
36	B08-602500140	O-RING	2	86	B07-04-060-02	LOCKNUT	1
37	B08-621000150	O-RING	1	87	B01-01-060300-02	HEX BOLT	1
38	AA40A-049A	VALVE CAP	1	88	B01-01-060350-02	HEX BOLT	1
39	AA40A-Y14A1	TRIGGER SET	1	89	B07-01-060-02	LOCKNUT	1
40	AA57A-013A	CYLINDER RETAINER	1	90	B07-01-050-04	LOCKNUT	2
41	AA57A-014A	BUMPER I	1	91	AA57A-018A	NAIL GUIDE	1
42	AA57A-015A	BUMPER II	1	92	B01-01-050160-02	HEX BOLT	2
43	AA57A-033A	SAFETY	1	93	B08-003500200	O-RING	1
44	AA57A-021A	SPRING	1	94	B01-04-050050-02	BOLT	1
45	B01-01-060160-02	HEX BOLT	1	95	B04-01-080-02	SPRING WASHER	1
46	B01-01-060120-02	HEX BOLT	1				
47	AA57A-032A	SAFETY LIMITR	1	101	AA57A-Y02A1	ACTIVE VALVE SET	
48	AA42A-017A	STOPGAP	1	102	AA57A-Y04A1	DRIVER SET	
49	AA57A-022A	PIN	1	103	AA17D-Y04A1	VALVE SLEEVE SET	
50	AA57A-023A	O-RING	1	104	AA17D-Y05A1	VALVE SET	
51	AA57A-020A	MUZZLE	1	105	AA17D-Y06A1	THIMBLE SET	

GBA57A00301